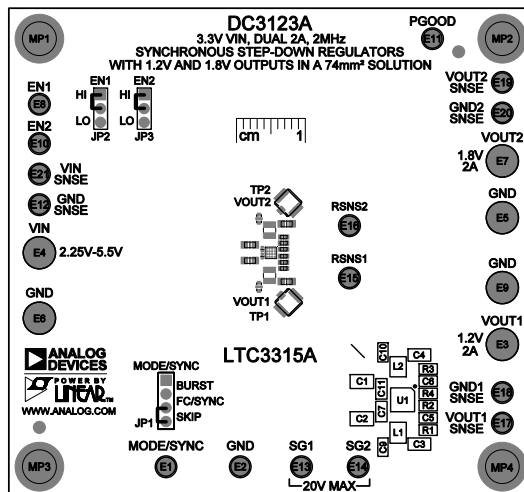


REVISION HISTORY				
ECO	REV	DESCRIPTION	APP. ENG.	DATE
-	03	PRODUCTION	MM	03-22-21

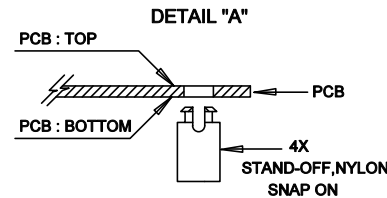
NOTES: UNLESS OTHERWISE SPECIFIED

1. WORKMANSHIP SHALL BE IN ACCORDANCE WITH IPC-A-610.
2. ASSEMBLY REFLOW PROFILE SHALL BE IN ACCORDANCE WITH J-STD-020 WITH MAXIMUM SOLDER TEMPERATURE OF 250 DEGREES CELSIUS.
3. PARTS TO OMIT WILL BE SPECIFIED ON THE BILL OF MATERIALS
LOCATIONS OF OMITTED PARTS SHALL BE FREE OF SOLDER.
MASK THE SOLDER STENCIL WHERE SMT PARTS ARE OMITTED.
4. INSTALL SHUNTS AS SHOWN ON ASSY DRAWING.
5. DEPANELIZE BOARDS AFTER ASSEMBLY AND ROUTE-OUT THE BREAKOUT TABS ON FOUR SIDES OF THE BOARD EDGE.
6. APPLY ASSEMBLY STAMP OR QA STAMP TO BOTTOM OF BOARD (UNSHOWY AREA).
7. INSTALL TURRETS, STAND-OFFS AS SHOWN BELOW:
8. APPLY DEMO S/N AT AREA ON BOTTOM SIDE AS SHOWN ON SHEET 2.

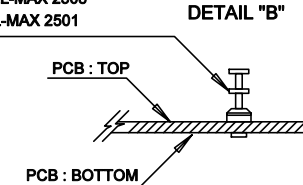




DETAIL "A"

DETAIL "B"



(15 PLCS) : MILL-MAX 2308
(6 PLCS) : MILL-MAX 2501



APPROVALS		 ANALOG DEVICES		 POWER BY LINEAR™	
PCB DES	NC	FOR ADI CUSTOMER USE ONLY			
APP ENG	MM	TITLE: TOP ASSEMBLY DRAWING 3.3V VIN, DUAL 2A, 2MHz SYNCHRONOUS STEP-DOWN REGULATORS WITH 1.2V AND 1.8V OUTPUTS, IN A 74mm² SOLUTION			
		SIZE N/A	IC NO. LTC3315A DEMO CIRCUIT 3123A	REV. 03	
SCALE = NONE				SHT 1 OF 1	